



ACOUSTICS



3000i



The best, redefined.

The new 3000i Series by Q Acoustics



## Contents

Introduction	4
The Technology	10
The Range	12
Specifications	18
Accessories	19

## Expectations Elevated

The 3000i Series is an evolution of the 3000 Series, which has undergone a number of innovative improvements intended to bring about significant enhancements in both sonic performance and aesthetics from the already established and highly awarded range. The 3000i Series forms the core hi-fi loudspeaker offering from Q Acoustics.

Coming from a fusion of both evolutionary and revolutionary thinking, the 3000i Series benefits from state-of-the-art speaker technology, as

well as improvements to the cabinet construction. Every 3000i Series model is an outstanding, genuine hi-fi loudspeaker with models that can also be combined to deliver a fantastic home cinema sound.

Beautiful to behold and available in four attractive finishes, they provide the perfect soundstage for music and movies, at an impressive price point delivering a pure and uncoloured sound that will please even the most discerning audiophile.









## The Ultimate Stereo Image

The purpose of an exceptional hi-fi system is quite simply to provide a musical experience in the home, which comes as close as possible to the real thing. The 3000i Series boasts a range of features that enable exactly this. Every detail, from the cabinet enclosure drivers, to the pioneering use of 'Concept' technology, has been specially commissioned for this range.

The emphasis on advanced cabinet design principles that preserve the subtle sonic clues which enable the ear to perceive a solid 3D soundstage is evident. Careful component matching and exhaustive listening tests have meant that the partnering electronics will do nothing to detract from the sheer enjoyment garnered by the sense of intimacy in the performance.



## Beautiful Inside & Out

The 3000i Series speakers are available in four finishes; Graphite Grey, English Walnut, Carbon Black or Arctic White, ensuring there is a finish perfect for your chosen listening room. All models feature an attractive chrome-finish bezel around each driver and magnetic speaker grilles.

The 3000i speaker terminal mounting panel (below left) has been reduced in size to comply with the low-resonance design philosophy of the rest of the enclosure. The binding posts have been made extra low-profile so that the speaker can be positioned very close to a rear wall even when banana plugs, rather than spades or bare wires are used.



Arctic White



Carbon Black



Graphite Grey



English Walnut







HIGH FREQUENCY DRIVER  
ACOUSTIC

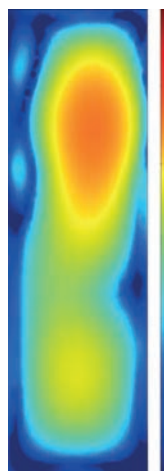


# Leading Technology, Pioneering Innovation

At the heart of the 3000i Series lies a wealth of technology that ensures they are a true step up from an already highly awarded series. P2P™ bracing has been introduced to help keep the enclosure extra quiet, while HPE™ is used to eliminate sympathetic resonance, equalising air pressure within the cabinet in addition a 22mm High Frequency Driver with a micro-fibre soft dome and wide surround helps to create a wide, even stereo image. These are just a few of the many technologies employed to elevate the 3000i Series.

## P2P™ \*

Q Acoustics P2P™ (Point to Point) bracing used throughout the 3000i series supports the parts of the enclosure that need to be stiffened making the new enclosures exceptionally rigid, improving the focus of the stereo image and giving the soundstage more accuracy than ever before.



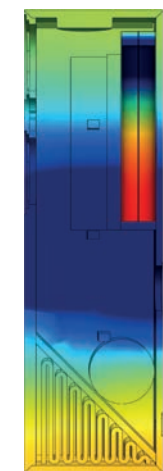
Conventional Bracing



P2P™ Bracing



Without HPE™



With HPE™

## HPE™ \*\*

HPE™ (Helmholtz Pressure Equalizer) technology designed to convert pressure to velocity and reduce the overall pressure gradient within the speaker enclosure, has been applied to the Q 3050i floorstanding speakers to reduce cabinet resonance. This technology is perfect for taller loudspeakers that tend to resonate at a single favoured frequency.

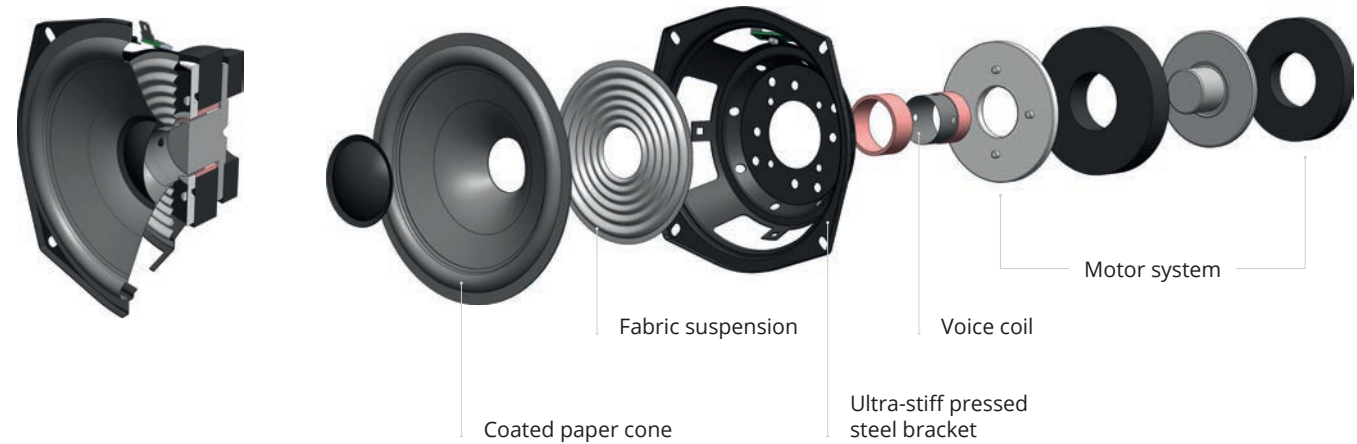
## High-Frequency Driver Unit

3000i Series tweeters are decoupled from the baffle via a compliant suspension system. Vibrations from the woofer, which can impair the performance of the tweeter are isolated allowing the tweeter to perform with dramatically reduced interference.



## Mid/Bass Driver

Whichever 3000i model you choose the cone is precision formed from impregnated and coated paper and teamed with a newly developed, low-hysteresis, rubber surround. The coated paper cone provides the optimum balance between stiffness and self-damping which means it can accelerate without flexing and stop very accurately without unwanted resonance.



## Q 3010i

A room-filling bookshelf / standmount speaker with 100mm (4 in) and 22mm (0.9 in) precision drivers, which can be shelf-mounted on compliant, pre-fitted rubber feet and either stand-mounted or wall-mounted on optional, dedicated stands and brackets.

- Focussing on power-to-size ratio, the crossover has been optimised to take advantage of a larger cabinet volume to enhance sensitivity and bass extension.
- Foam bungs are provided for the rear-facing ports to help with less than ideal room positioning. The level of bass can be reduced to compensate, but definition and bass extension are increased.
- Conventional terminal panel cut-outs have been removed, giving greatly improved structural integrity to the enclosures and instead new low profile binding posts have been incorporated with sockets deep enough to accept 4mm (0.16 in) Banana Plugs. (We always recommend QED Speaker Cables).



## Q 3020i

A substantial standmount / bookshelf speaker with 125mm (5 in) and 22mm (0.9 in) precision drivers, which can be shelf-mounted on compliant pre-fitted rubber feet and either stand mounted or wall-mounted on dedicated optional stands and brackets.

- A large cabinet depth provides the listener with deep powerful bass from the smallest front baffle possible.
- Foam bungs are provided for the rear-facing ports to help with less than ideal room positioning. The level of bass can be reduced to compensate, but definition and bass extension are increased.
- Conventional terminal panel cut-outs have been removed, giving greatly improved structural integrity to the enclosures and instead, new low profile binding posts have been incorporated with sockets deep enough to accept 4mm (0.16 in) Banana Plugs (We always recommend QED Speaker Cables).



## Q 3050i

A striking floorstanding speaker with twin 165mm (6.5 in) and 22mm (0.9 in) precision drivers, this can be floor-mounted using rubber feet or spikes (provided). Q 3050i also features a rear outrigger plinth for extra stability.

- The internal structure of the Q 3050i has been designed to incorporate what we have learned about minimising unwanted resonances using Helmholtz Pressure Equalisation (HPE™). This greatly improves the linearity of the bass performance while the cabinet uses Point-to-Point (P2P™) bracing techniques to reduce intrusive cabinet vibrations. Both technologies come from our experience with Concept Series speaker developments.
- Foam bungs are provided for the rear-facing ports to help with less than ideal room positioning. The level of bass can be reduced to compensate, but definition and bass extension are increased.
- Conventional terminal panel cut-outs have been removed, giving greatly improved structural integrity to the enclosures and instead, new low profile binding posts have been incorporated with sockets deep enough to accept 4mm ( 0.16 in) Banana Plugs (We always recommend QED Speaker Cables).





## Q 3060S

A slimline active subwoofer with a 200mm driver incorporating a powerful 150W amplifier. It is wall-mountable with an optional, dedicated wall bracket or can be floor-mounted using rubber feet or the spikes provided.

- All of the controls and connections are hidden behind a magnetic hatch with a down-facing opening for discrete cable runs.
- The Q 3060S is one of the slimmest subwoofers available but can still deliver every nuance of an acoustic double bass or rumble of a cinematic explosion.



## Q 3090Ci

An accurate centre speaker with twin 100mm (4in) and 22mm (0.9in) precision drivers can be shelf or cabinet mounted on its compliant pre-fitted rubber feet or wall-mounted on optional, dedicate brackets.

- The centre speaker is the heart of any home cinema system and we have worked hard to perfect a crisp, clear and balanced sound for dialogue.
- The Q 3090Ci is the same width as most amplifiers and AV receivers so will fit attractively into the specialist furniture designed to house them.

- The normal terminal panel cut-out has been removed, giving greatly improved structural integrity to the enclosures and instead, new low profile binding posts have been incorporated with sockets deep enough to accept 4mm (0.16in) Banana Plugs.



# Cinema Packs

## Q 3010i Cinema Pack

---

Comprising two pairs of Q 3010i + Q 3060 subwoofer + Q 3090i centre and providing a massive cinema sound from compact cabinets all of which can be wall mounted with optional, dedicated brackets.

## Q 3000i in Dolby Atmos and DTS:X

---

Closely matched Q Acoustics in-ceiling and surface-mount speakers are available to add to either 3000i Cinema Pack in order to provide an enhanced multi-channel sound. Under these circumstances we would also recommend using two subwoofers.



Q 3010i Cinema Pack

## Q 3050i Cinema Pack

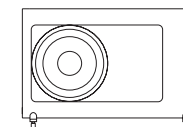
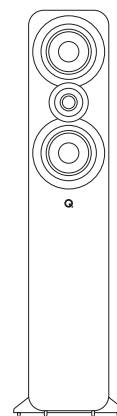
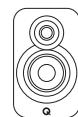
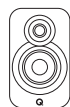
---

Comprising one pair of Q 3050i floorstanding + Q 3010i + Q 3060S subwoofer + Q 3090Ci centre for when a main set of floorstanding speakers is preferred for listening in stereo.



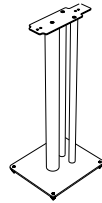
Q 3050i Cinema Pack

# Specifications



	<b>Q 3010i</b>	<b>Q 3020i</b>	<b>Q 3050i Floorstanding</b>	<b>Q 3090Ci</b>	<b>Q 3060S</b>
<b>Loudspeaker</b>					
<b>Enclosure Type</b>	2-way reflex	2-way reflex	2-way reflex	2-way reflex	infinite baffle
<b>Bass Unit</b>	100 mm (4in)	125 mm (5in)	2 x 165 mm ( 6.5in)	2 x 100 mm (4in)	200 mm (8in)
<b>Treble Unit</b>	22 mm (0.9in)	22 mm (0.9in)	22 mm (0.9in)	22 mm (0.9in)	-
<b>Frequency Response (+3 dB, -6 dB)</b>	65 Hz – 30 kHz	64 Hz – 30 kHz	44 Hz – 30 kHz	75 Hz – 30 kHz	35 – 250 Hz
<b>Average Impedance</b>	6 Ω	6 Ω	6 Ω	6 Ω	-
<b>Minimum Impedance</b>	4 Ω	4 Ω	4 Ω	4 Ω	-
<b>Sensitivity (2.83 Vrms@1 m)</b>	86 dB	88 dB	91 dB	89 dB	-
<b>Stereo Amplifier Power</b>	15 – 75 W	25 – 75 W	25 – 180 W	25 – 100 W	-
<b>AV Receiver (2 ch. driven)</b>	50 - 125 W	50 - 125 W	50 - 165 W	50-165 W	-
<b>Internal Amplifier Power</b>	-	-	-	-	150 W Class D
<b>Cross-over Frequency</b>	2.6 kHz	2.4 kHz	2.5 kHz	2.7 kHz	35 – 250 Hz (var)
<b>Effective Volume</b>	4.0 L (244 cu in)	6.1 L (372 cu in)	32.4 L (1977 cu in)	6.6 L (403 cu in)	10.6 L (647 cu in)
<b>Enclosure Dimensions (WxHxD) (inc. grille terminals and feet)</b>	150 x 253 x 252 mm (5.9 x 10.0 x 10in)	170 x 278 x 282 mm (6.7 x 11.0 x 11.1in)	310 x 1020 x 310 mm (12.2 x 40.1 x 12.2in)	430 x 152 x 216 mm (16.9 x 6.0 x 8.5in)	480 x 300 x 150 mm (18.9 x 11.8 x 5.9 in)
<b>Weight (per speaker)</b>	4.1 kg (9.0 lbs)	5.5 kg (12.1 lbs)	17.8 kg (39.2 lbs)	6 kg (13.2 lbs)	8.5 kg (18.7 lbs)
<b>Stock codes</b>	QA3510 Grey QA3512 Walnut QA3516 Black QA3518 White	QA3520 Grey QA3522 Walnut QA3526 Black QA3528 White	QA3550 Grey QA3552 Walnut QA3556 Black QA3558 White	QA3560 Grey QA3562 Walnut QA3566 Black QA3568 White	QA3590 Grey QA3592 Walnut QA3596 Black QA3598 White

# Accessories



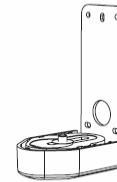
**Q 3000FSi  
Speaker Stand**

Q 3000FSi Floor Stands are designed to provide secure and sonically optimised supports for Q 3010i, Q 3020i and 3090i, available in two finishes to choose which looks best with your speakers.

250 x 682 x 290 mm  
( 9.8 x 26.9 x 11.4in)

6.2 kg (13.7 lb)

QA3102 Black  
QA3104 White



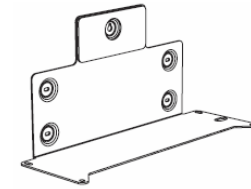
**Q 3000WB  
Speaker Bracket**

Q 3000WB Wall Brackets will provide safe and flexible wall mounting for Q 3010i, Q 3020i and Q 3090i and are also compatible with 3000. Each bracket comes with both a black and white cover to suit your speakers.

70 x 159 x 99 mm  
(2.8 x 6.3 x 3.9in)

0.4 kg (0.9 lb)

QA3100



**Q 60WB  
Subwoofer Bracket**

Q 60WB Subwoofer Wall Bracket firmly fixes a Q 3060S to the wall adding even more power to the bass from the close proximity of the wall and ensuring that it can't overturn.

422 x 233 x 163 mm  
(16.6 x 9.2 x 6.4in)

2.4 kg (5.3 lb)

QA7822



[qacoustics.co.uk](http://qacoustics.co.uk)