

tubeLine

*Vincent*  
People & Music

MUSIC  
IN PERFECTION





# DISCOVERING NEW PATHS

We do not always have to reinvent ourselves, but it certainly feels good when you can. We have discovered new paths and rewritten the old stories about "impossible" things with our new SA-T7 preamplifier and the SP-T700 monoblock. This new development allows us to hear music in a way that was previously thought impossible in expert circles.

We are particularly proud at Vincent about the SA-T7 preamplifier. It uniquely combines high-linear amplification with extremely low noise and excellent speed for the best possible music enjoyment, representing the pinnacle of our long-term experience in the creation of innovative valve amplifiers. Innovation at a fair price and the best about it is that it is "Engineered in Germany"!

And yet another highlight. The completely newly developed hybrid power amplifier SP-T700. This combines the best of two worlds: Subtle reproduction of voices and acoustic instruments, plus the strength and punch of a huge rock stage – an absolutely exceptional talent, "Engineered in Germany" of course!

"Paths are created by walking them". With this principle, we continuously and consistently develop new technologies to offer you the best of quality and excellent listening experiences.







# tubeLine

A unique music experience has been created thanks to our BestPentode circuit technology, in combination with the refined Vimala power supply coupling.

Take a look, it is worth it ...



## SA-T7 Stereo Tube Preamplifier

The latest BestPentode circuit technology is used here. This provides highly linear amplification with low noise and amazing dynamics for the best possible enjoyment of music. The type CV6189 valve used in the SA-T7 can exploit its potential here to the fullest.

Audio 01/15 Review: "Sound evaluation/Price/Performance: excellent"



tubeLine

- Frequency response: 10 Hz – 100 kHz +/- 0.1 dB, Nominal output voltage: 3 Volt
- Harmonic distortion: < 0.001 % (1 kHz, Output voltage 2Veff at 10 kOhm)
- Amplification: Typical 13.3 dB (volume controller max. gain)
- Input sensitivity: 43 mV (for 2 Volt output voltage)
- Signal-noise ratio: Typical >100 dB(A)
- Input impedance: > 22 kOhm
- Inputs: 6 x stereo RCA, 1 x optical, 1 x coax
- Outputs: 2 x stereo RCA (Pre Out), 1 x stereo RCA (Rec Out), 2 x 3.5 mm Jack socket (Power Control)
- Tubes: 4 x CV6189; 4 x 6S3P-EV; 1 x 85A2
- Colour: Black/Silver, Weight: 8.5 kg
- Dimensions (WxHxD): 430 x 135 x 370 mm





# ENGINEERING EXPERTISE, MADE IN GERMANY ...

Standard, classic circuit technology does not fully exploit the potential of a valve. With the SA-T7, we have developed a preamplifier that raises the pure amplification of valuable music signals to a level never conceived of before with tubes. Thanks to the newly developed BestPentode circuit (developed by chartered engineer Frank Blöhbaum, more on Page 18), the current distribution noise typical of pentodes is now a thing of the past.

Innovation at a fair price. Developed and produced in Germany.

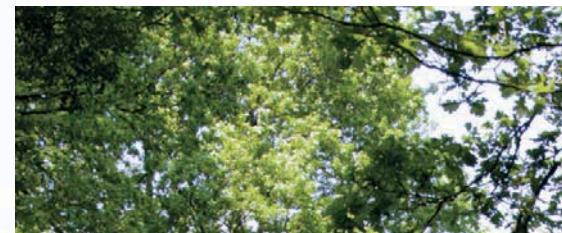


# THE VALVE HITS THE SPOT...

A completely new combination amplifier was developed for the SP-T700, exploiting the respective advantages of tubes and transistors in an innovative manner, combining them to create a harmonious whole. The SP-T700 is characterised by excellent reproduction features that remain constant over the entire frequency and load range (more on Page 20), and it has a superior power reserve.



The tubes are 100% selected frame grid tubes from the military sector. They are designed for a lifetime of 10,000 hours.





tubeLine

## SP-T700 Class-A Mono Hybrid Power Amplifier

The best of two worlds: Subtle reproduction of voices and acoustic instruments, plus the strength and punch of a huge rock stage – the SP-T700 is an exceptional power amplifier that meets such contradictory requirements with elegant ease. This is only possible due to the latest tube technology, combined with a transistor end stage. The outcome: Inspiring sound, plus strength and comprehensive speaker control.



- Frequency response: 20Hz – 20kHz +/- 0.5dB
- Nominal output power RMS / 4 Ohm: 300 Watt, RMS 8 Ohm: 150 Watt, Class A/8 Ohm: 10 Watt
- Harmonic distortion: < 0.01 % (1 kHz, 1 Watt); <0.1% (1kHz, 25 Watt)
- Input sensitivity: 1 Volt (for 25 Watt RMS at 4 Ohm)
- Signal-noise ratio: > 90 dB
- Input impedance: > 22 kOhm
- Inputs: 1 x mono RCA, 1 x 3.5 mm Jack socket (Power Control)
- Outputs: 2 x 2 Speaker terminals, 1 x 3.5 mm Jack socket (Power Control)
- Tubes: 1 x 6S3P-EV; 1 x 6SCH9P, 1 x 6Z4
- Colour: Black/Silver, Weight: 16 kg
- Dimensions (WxHxD): 210 x 263 x 400 mm





tubeLine

## SV-700 Hybrid Stereo Integrated Amplifier

We decided on a consistent symmetrical design to minimize crossfeed and achieve a better distortion factor. In the pre-amp, 3 tubes per side work with the Shunt Regulated Push-Pull concept to process the sound signals. This ensures more precise bass reproduction and a better performance in the mid and high level sound range.



tubeLine

- Frequency response: 20 Hz – 20 kHz +/-0.5 dB
- Nominal output power RMS / 8 Ohm: 2 x 100 Watt, RMS / 4 Ohm: 2 x 160 Watt
- Nominal output power RMS Class A / 8 Ohm: 2 x 50 Watt
- Harmonic distortion: < 0.1% (1 kHz, 1 Watt)
- Input sensitivity: 350 mV, Signal-noise ratio: > 90 dB
- Input impedance: 47 kOhm
- Power consumption: 350 Watt (Class A mode), 150 Watt (Class AB mode)
- Inputs: 3 x stereo RCA, 1 x stereo XLR, 1 x optical, 1 x coaxial
- Outputs: 1 x Stereo Rec Out, 1 x Stereo Pre Out, 2 x 2 Speaker terminals, 2 x 3.5 mm Jack socket (Power Control)
- Tubes: 1 x 6Z4, 2 x 12AX7, 4 x 12AU7
- Colour: Black/Silver, Weight: 24.2 kg
- Dimensions (WxHxD): 430 x 192 x 430 mm







## OUR STRONGEST HYBRID...

We have combined the best of both audiophile worlds. Warm and pleasant tube sound, combined with the dynamics and power of the transistor. An all-round talent where our focus was on 2 maxims during development: Sound and playing enjoyment.



# THE RIGHT DESIGN IS DECISIVE...

The Frank Blöhma touch once again. The circuit concept was completely reworked and improved. Musicality and sound are significantly better than in the previous model. Even difficult speakers can be driven without difficulty. The amplifier always masters the complex load (speaker) without sounding stressed.



*Vincent*  
People & Music



## SV-237

### Class A Stereo Hybrid Integrated Amplifier

The logical further development of a legendary amplifier started with the SV-236, continued with the SV-236MK, and finally led to the SV-237, which is almost unrivalled in its price range after improving the few minor weaknesses of the previous models. A contemporary USB slot was also added.



tubeLine

- Frequency response: 20 Hz - 50 kHz +/- 0.5 dB
- Nominal output power RMS / 8 Ohm: 2 x 150 Watt,  
Nominal output power RMS / 4 Ohm: 2 x 250 Watt
- Nominal output power Class A / 8 Ohm: 2 x 10 Watt,  
Harmonic distortion: < 0.1 % (1 kHz, 1 Watt)
- Input sensitivity: 350 mV, Signal-noise ratio: > 82.8 dB
- Input impedance: 47 kOhm, Inputs: 5 x stereo RCA, 1 x USB
- Outputs: 2 x 4 speaker terminals, 1 x stereo RCA Rec Out,  
1 x stereo RCA Pre-Out, 2 x 3.5 mm Jack socket (Power Control)
- Tubes: 1 x 12AX7, 2 x 6N1P-EV
- Colour: Black/Silver, Weight: 20.4 kg
- Dimensions (WxHxD): 430 x 150 x 435 mm





## CD-S7 Hybrid CD-Player

A lower sound quality is not to be expected in the CD-S7 when compared with the CD-S7 DAC. The same high quality components as in the bigger sibling are used here. Transparency and spaciousness are apparent from the first note onwards.



tubeLine

- D/A converter: 24 bit / 192 kHz, Frequency response: 20 Hz - 20 KHz +/-0.5 dB
- Harmonic distortion: < 0.005 %, Signal-noise ratio: > 94 dB, Dynamic range: > 100 dB
- Audio-output voltage: 2.5 Volt, Channel separation: > 90 dB
- Inputs: 1 x Headphone Jack 6.3 mm, 1 x 3.5 mm Jack socket (Power Control)
- Outputs: 1 x Stereo RCA, 1 x Digital Coaxial, 1 x 3.5 mm Jack socket (Power Control)
- Tubes: 2 x 12AX7B, 1 x 6Z4, Colour: Black/Silver, Weight: 9 kg
- Dimensions (WxHxD): 430 x 132 x 356 mm







## ALL IN - ANALOG OUT...

A CD-player that masters even the most subtle differences! Let yourself be impressed during a listening test. Our CD-S7 is the flagship model at Vincent. Starting with the processing and not ending with the sound reproduction





## CD-S7 DAC

### Hybrid CD-Player

The abbreviation "DAC" already indicates that it is possible to transfer external digital signals (optical, coaxial or USB) to the excellent Burr-Brown D/A converter PCM 1796, thus profiting from the fantastic analogue signal processing. The analogue signal is output fully symmetrically and processed along the signal route by means of Russian tubes.



### tubeLine

- D/A converter: 24 bit / 192 kHz, Frequency response: 20 Hz - 20 KHz +/-0.5 dB
- Harmonic distortion: < 0.005 %, Signal-noise ratio: > 94 dB
- Dynamic range: > 100 dB, Audio output voltage: 2.5 V, Channel separation: > 90 dB
- Inputs: 1 x USB, 1 x digital optical, 1 x digital coaxial  
1 x 3.5 mm Jack socket (Power Control)
- Outputs: 1 x stereo RCA, 1 x stereo XLR, 1 x digital coaxial  
1 x 3.5 mm Jack socket (Power Control)
- Tubes: 2 x 6922, 1 x 6Z4, 1 x 12AX7B
- Colour: Black/Silver, Weight: 9 kg
- Dimensions (WxHxD): 430 x 132 x 356 mm





## PHO 700 Tube Phono Preamplifier

As the output signal is significantly smaller in a record player than it is in a CD-player, for instance, it is necessary to ensure low-noise and loss-free transmission. The basis for this in the PHO-700 is a complex external power supply unit. We have deliberately omitted a plug-in AC adapter, replacing this with our specially developed power supply unit to avoid crossfeed. The PHO-700 is of course selectable via a switch on the rear panel for MM and MC pick-ups.



**tubeLine**

- Frequency response: 10 Hz – 20 kHz, Harmonic distortion: 0.05 % (20 Hz – 20 kHz)
- Input sensitivity: MM: 58 mV, MC: 6.8 mV
- Signal-noise ratio: MM: > 81 dB, MC: > 69 dB
- Input impedance: MM: 47 kOhm, MC: 100 Ohm
- Output impedance: 250 Ohm, Amplification factor: MM: 40 dB, MC: 60 dB
- Power consumption: 15 Watt
- Colour: Black/Silver, Weight: 1.5 kg (power unit), 1.2 kg (phono preamplifier)
- Dimensions (WxHxD): 130 x 82 x 225 mm



*Vincent*

People & Music



# tubeLine

The KHV-1 enables switching between two connected sources in addition to mastering excellent headphone reproduction.



tubeLine

## KHV-1 Hybrid Headphone Amplifier

When used as a headphone amplifier, it produces that warm, soft, and oh-so-precise sound that music lovers esteem, thanks to the two 12AX7 tubes. It also makes bridging possible as a preamplifier. In this case, it is an ideal complement to the SP-997. This produces a compact, space-saving stereo system for harmonious, open sounds.



- Frequency response: 20 Hz – 50 kHz +/- 0.5 dB
- Nominal output power: 400 mWatt (300 Ohm), 1.75 Watt (32 Ohm)
- Nominal output voltage Pre Out: 2V (max. 4 V)
- Harmonic distortion: < 0.1 % (1 kHz, 100 mWatt), Input sensitivity: 600 mV
- Signal-noise ratio: > 90 dB, Input impedance: 47 kOhm
- Inputs: 2 x stereo RCA 1 x headphone Jack 6.3 mm
- Outputs: 1 x stereo RCA Pre-Out
- Tubes: 2 x 12AX7
- Colour: Black/Silver, Weight: 3.8 kg
- Dimensions (WxHxD): 160 x 265 x 210 mm



## NEVER BEFORE...

Modern signal sources place completely new demands on the transmission quality of amplifiers. Conventional (classic) circuit technology used with the ECC81/82/83/88 does not fully exploit the potential of valve technology.

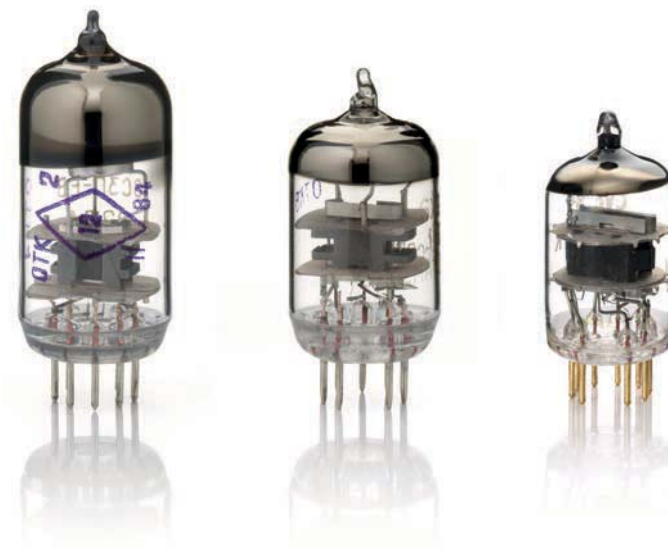
### New developments in tube technology?

Yes, of course! And fundamentally different from existing classic designs: We have developed a preamplifier with the SA-T7 that raises the pure amplification of valuable music signals to a level never conceived of before with tubes.

This was made possible with a patent pending circuit technology. Thanks to the newly developed BestPentode circuit, developed by chartered engineer Frank Blöhbaum, the current distribution noise typical of pentodes is now a thing of the past.



Dipl.-Ing. Frank Blöhbaum



### And, even better:

Such a BestPentode stage has a far higher amplification with less noise than comparable triodes. The type CV6189 frame grid pentode used in the SA-T7 can exploit its potential here to the fullest. The tube is a NOS (New Old Stock) tube stored in old stocks fresh from the factory. The original use was to amplify high-frequency signals in 24/7 telecommunications operation. The guaranteed life for these tubes, developed in England for professional continuous use, was 10,000 hours.





# tubeLine

Highly linear amplification has been uniquely combined with extremely low noise and excellent speed for the best possible music enjoyment thanks to the novel BestPentode circuit technology used for the first time as a standard feature together with the clever Vimala power source coupling system.

## Our "BestPentode stage" Vimala

The impedance converter stage was created using a type 6S3P-EV -grid triode – a Russian military tube formerly used in MIG airborne radar systems and also designed for a long service life. The extremely pure audio transmission is ensured by the low-noise power supply couplings of the BestPentode stage. A special module was developed for this purpose, the Vimala – which is Sanskrit for "pure, transparent, clear".

Another gain block, comprising the CV6189, 6S3P-EV and Vimala module, takes over the precision regulation of treble and bass so that you can adapt the system to your personal listening requirements. This option can, of course, be deactivated.

## The effort was worth it!

Thanks to the extremely low output resistance of this novel amplifier technology – typically less than 1 Ohm – the amplifier outputs were designed with a purely resistive behaviour. This

ensures uniform transmission across the entire frequency range and problem-free actuation of even critical connection cables. Two different output resistances are available for practical connection: 50 Ohm and 600 Ohm.

At Vincent, we are particularly proud of the SA-T7: It is the pinnacle of long-term experience in the production of innovative tube amplifiers.

**Innovation at a fair price.**

**Developed and produced in Germany.**



Vimala: Unsere „BestPentode-Stufe“





## A SUCCESSFUL COMBINATION...

Modern loudspeakers place high demands on the output amplifier: Small bass diaphragms mean a lower degree of efficiency and the necessity for a lot of actuation power. At the same time, attempts are made to tease the maximum of bass out of small housings with complex filters. The resulting impedances, which are often rather hair-raising, require powerful, potent output amplifiers with very high stability.

To put it graphically: A ballet dancer, lifting heavy weights as and when needed – whilst turning pirouettes.

### The best of two worlds:

Subtle reproduction of voices and acoustic instruments, plus the strength and punch of a huge rock stage – the SP-T700 is an exceptional power amplifier that meets such contradictory requirements with elegant ease.

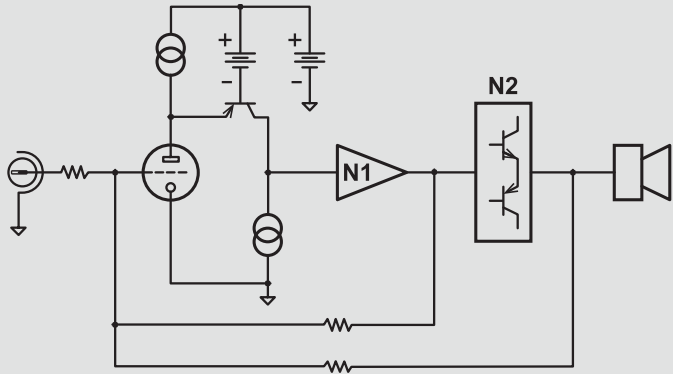


### A new circuit principle

This is only possible thanks to the combination of the best of two technology worlds: State-of-the-art tube technology plus transistor end stage – resulting in inspiring sound, strength and comprehensive speaker control. The tube and transistor circuitry aren't being coupled together here in the typical manner.

Quite the contrary: A completely new combination amplifier was developed for the SP-T700, exploiting the respective advantages of tubes and transistors in an innovative manner, combining them to create a harmonious whole.

A globally unique and completely newly developed tube amplifier receives the music signals and amplifies them with the highest of purity and clarity. The transistor power amplifier controlled by this tube stage delivers just the right amount of current to actuate even difficult loudspeakers with ease.



**Basic circuit diagram of the SP-T700**  
 Triode: 6S3P-EV wired as a highly linear transconductance amplifier  
 N1: Driver stage with 6SCH9P  
 N2: Transistor buffer



**1 x 6S3P-EV; 1 x 6SCH9P, 1 x 6Z4**

The tubes are 100% selected frame grid tubes from the military sector, designed for a guaranteed service life of 10,000 hours (in comparison: just 500 hours are guaranteed for an ECC83). The working points, selected well below the limit data, and their fully automated monitoring also contribute to a very long valve life.

The circuit principle of the tube amplifier used here – a directly coupled transconductance amplifier with highly constant current and voltage conditions for the amplifier tube – leads to a very high voltage amplification with high linearity and very broad bandwidth. A highly linear driver stage, created using the frame grid pentode 6SCH9P, ensures smooth actuation of the transistor buffer.

### Technology that impresses

The novel, state-of-the-art valve circuit technology used for the first time in the SP-T700 enables a transmission behaviour that is controlled only by this highly linear valve amplifier. The outcome is a power amplifier whose excellent reproduction characteristics remain constant over the complete frequency and load range and which has high power reserves within its compact dimensions.

The circuit structure of an amplifier is decisive. The actual implementation is, too. In order to fully exploit the advantages of the novel amplifier concept in the SP-T700, only the best was used for the power supply unit as well: The power supply for the tube stage is rectified with a 6Z4 and then electronically controlled and smoothed. The transistor buffer is based on a high-performance power supply unit, comprising an over-dimensioned toroidal transformer and switching-stable electrolytic capacitors.



tubeLine



# tubeLine

## ALSO IN SILVER ...



**SA-T7**  
Stereo Tube Preamp



**SV-237**  
Class A Stereo Hybrid Integrated Amp



**CD-S7 DAC**  
Hybrid CD-Player



**SP-T700**  
Class-A Hybrid Monoblock Amp



**SV-700**  
Hybrid Stereo Integrated Amp



**KHV-1**  
Hybrid Headphone Amp









**CD-S7**  
Hybrid CD-Player



**PHO 700**  
Tube Phono Preamp

### CAPTIONS

-  In addition to cinch connections, there are also XLR connections for signal inputs, signal outputs or the pre/power amplifier connections. Output power per channel in Class A operation, measured in Watt at 8 Ohm.
-  With valve amplifier technology.
-  With transistor amplifier technology.

-  The output stage of the device uses Class A amplifier technology.
-  Output power per channel at 4 Ohm.
-  With USB connection



# MUSIC IN PERFECTION



**LEGAL NOTICE**

Concept and design:

Stefanie Braun

Stone Agentur für Werbung GmbH Iffezheim

Typesetting, layouts, retouching::

Stefanie Braun

Photography:

Studio Arte Pforzheim

Reproduction, even of extracts, only permissible with written consent of Stone Agentur für Werbung GmbH. [www.stone-gmbh.de](http://www.stone-gmbh.de)

Status 2015

Subject to changes, especially technical changes, and errors.



tubeLine

MUSIC  
IN PERFECTION

VINCENT-TAC.DE

*Vincent*  
People & Music

Subject to errors and changes. Nominal charge 5 Euro