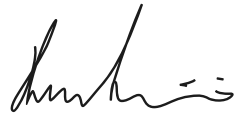


USER MANUAL

PH-1000
PH-1000 LINE

*Thank you for purchasing one of our units
and welcome into the Gold Note world,
where we turn High-End audio and music
into a new experience.*

Maurizio Aterini,
founder of Gold Note

A handwritten signature in black ink, appearing to read 'Maurizio Aterini', with a stylized flourish at the end.

IMPORTANT SAFETY INFORMATIONS

PLEASE NOTE

- 1 Do not disassemble any part of the product.
- 2 Do not use any part of the product for other purposes.
- 3 For service and problems of any kind, contact qualified Gold Note personnel.
- 4 Protect the product from rain, humidity and keep away from heat sources, electric and electronic motors etc. The power cord supplied must be used only on this unit.
- 5 Gold Note does not have responsibility for any improper use of this unit.

GENERIC INFORMATION

- | Read these instructions and store them.
- | Heed all warnings.
- | Follow the instructions.
- | Do not use this apparatus near water.
- | Clean only with a dry cloth.
- | Do not block the ventilation openings and install in accordance with the manufacturer's instructions.
- | Do not install near heat sources such as radiators, heat registers, stoves or other apparatus (including amplifiers) that produce heat.
- | Do not defeat the safety purpose of the polarised or grounding-type plug: a polarised plug has two blades with one wider than the other.
- | A grounding type plug has two blades and a third grounding prong. The wide blade or

the third prong are provided for your safety.

If the provided plug does not fit into your outlet, consult an electrician for replacement of the obsolete outlet. or pinched particularly at plugs, convenience receptacles, and the point where they exit from the apparatus.

- | Only use attachments/accessories specified by the manufacturer.

- | Use only with the cart, stand, tripod, bracket, or table specified by the manufacturer, or sold with the apparatus.

When a cart is used, use caution when moving the cart/apparatus combination to avoid injury from tip-over.

- | Unplug this apparatus during lightning storms or when unused for long periods of time. Refer all servicing to qualified service personnel only. Servicing is required when the apparatus has been damaged in any way (such as when the power cord or plug is damaged, liquid has been spilled or objects have fallen into the apparatus, the apparatus has been exposed to rain or moisture) and in any case when the apparatus does not operate normally or has been dropped.

This appliance has a serial number located on the rear panel.
Please record the model and serial number and retain them for your records.

MODEL

SERIAL NUMBER



CAUTION!

To reduce the risk of electric shock, do not remove cover (or back). No user-serviceable parts inside. Refer only to qualified Gold Note service personnel for service.

WARNING!

To prevent fire or shock hazard, do not expose this appliance to rain or moisture.



GOLD NOTE - Information on the correct management of waste from household Equipment pursuant to the European Directive 2012/19/EU

The crossed-out whee bin symbol shown on the equipment or its packaging indicates that the product, at the end of its useful life, must be collected separately from other waste to allow its proper treatment and recycling. The user must therefore deliver, free of charge, the end-of-life equipment to the centres for the separate collection of waste electrical and electronic equipment, or return it to the dealer in accordance with the procedures established by the legislation.

The appropriate separate collection of discarded equipment allows for proper recycling, treatment and environmentally compatible disposal, helping to avoid the possible dispersion of hazardous substances and negative effects on the environment and health, favouring the reuse and/or recycling of the materials of which the equipment is composed of. Illegal dumping of the product by the user involves the application of administrative sanction provided for by the legislation in force. We invite you consult the current legislation and the measures adopted by the public service operating in your country or territory.

| INDEX

INTRODUCTION AND FEATURES	1
TECHNICAL SPECIFICATIONS	3
FRONT PANEL	5
REAR PANEL	6
SELECT FUNCTIONS	7
DISPLAY OVERVIEW	8
EQ CURVES	10
FIRMWARE UPDATE	12
WARRANTY AND SERVICE	12
TROUBLESHOOTING	13
RELATED PRODUCTS	15

| PACKAGE CONTENT

1x

PH-1000

1x

AC CABLE

1x

USER
MANUAL

1x

REMOTE
CONTROL

| INTRODUCTION AND FEATURES

THE MOST ADVANCED PHONO STAGE

The PH-1000 is simply the best Phono Stage we have ever created, a unique piece of audio engineering designed to be innovative in every possible way and 100% made in Italy. Featuring Class-A exclusive discrete components, a Class-A headphone output, +40 EQ curves preset, 4 custom EQ curves manually adjustable, and the high-quality Class-A line preamp which comes as an optional.

For the first time ever, you will be able to play virtually any record the way it's meant to be thanks to more than 40 EQ curves available, or even customise the EQ curves manually by adjusting three main parameters - that's why the PH-1000 is a complete game-changer, opening a new era in vinyl reproduction.

PERFECT CARTRIDGE MATCHING

With 7 Gain and 12 Load levels, as well as 6 Capacitance options dedicated to MM cartridges, it is the ideal phono stage for high-performance analogue systems, capable of driving even the most exotic of cartridges with perfect synergy, making the PH-1000 a professional instrument for high-end studio recording.

On top of that, you can change settings and make ultra-fine adjustments, including the EQ curve, on the go by simply using the SKC and the display as you are playing music. Our innovative technology allows the best ease of use while preserving entirely the sound quality as it works in the analogue domain: the interface is digital and independent from the audio path, which is completely analogue. The result is an ultra-low noise phono stage with high gain and no audio filters.

All the functionalities are in fact managed through discrete audio-grade components and sealed single switches, always shortening the signal path to deliver superior audio quality and extract even the finest details from the vinyl record. Powered by our custom firmware, the PH-1000 can be easily updated via computer when necessary.

MAXIMUM FLEXIBILITY

The PH-1000 offers 3 independent inputs, two RCA and one XLR. There are also 2 other inputs, one RCA and one XLR, that can be used either for the external load plugs for even finer control of the Load or as line inputs on the PH-1000 with Preamp.

Add the other functionalities, such as the Headphone Output, the Stereo/Mono control with phase inversion, the L/R Channel Swap and the Rumble Subsonic Filter and here you have it, the most advanced phono stage on the market.

HIGH-QUALITY COMPONENTS

The level of quality meets the highest standard throughout the entire production: from the aluminium ultra-solid chassis machined with precision to the electronic components and circuitry that undergo strict QC computer-controlled tests.

40+ EQ CURVES

RIAA, Capitol, Columbia/CBS, Deutsche Grammophon, Decca London USA, Decca London UK and Decca Mono 78rpm, Epic, HMW, Mercury, RCA Victor, Philips, Elektra, L'Oiseau-Lyre, Parlophone, and more. Each curve can be "enhanced" with our proprietary technology inspired by the Neumann Cutting Lathe for superior dynamic and musicality.

TOTAL CONTROL

The PH-1000 shows every detail on the colour display powered by our proprietary firmware. With the SKC [Single Knob Control technology] and the display, you have an intuitive system to easily control the phono stage and quickly make fine-adjustments without even interrupting the playback.

HEADPHONE OUTPUT

You can now enjoy the shortest audio path ever with the PH-1000, your turntable and your headphones - that's all you need for the audio signal to go from the vinyl directly into your headphones without the need of additional stages.

MODULAR DESIGN

For the most demanding audiophiles, the PH-1000 can also be further enhanced with our external power supply PSU-1250/PSU-1000, or even the external tube output stage TUBE-1012/TUBE-1006, to reach the highest level of musical realism in terms of dynamic, details, and imaging.

| TECHNICAL SPECIFICATIONS

MAIN FEATURES

- | Frequency response: 20Hz – 20KHz
- | +20 EQ presets, 4 custom setups (infinite variable curves), all with “Enhanced” option @ +/- 0.3dB max.
- | THD (Total Harmonic Distortion): <0.01% MAX
- | Signal to noise ratio: -100dB
- | Dynamic range: 110dB
- | Output impedance: 50Ω
- | Subsonic filter: 10Hz/36dB octave (ON/OFF)
- | Mono/Stereo: Stereo, Stereo 180°, Mono, Mono 180°, Mono L
- | Channel Swapping: R/L, L/R
- | IR receiver for multifunctional remote control

AUDIO OUTPUTS

- | 1x RCA
- | 1x XLR
- | 1x Output Stereo for Tube (balanced GN) for optional TUBE-1012 & TUBE-1006

POWER

- | Power supply:
Dual-Mono linear power supply 100-240V with automatic selection
- | Power consumption:
30W
- | PSU Input for external power supply Gold Note PSU-1250 & PSU-1000

AUDIO INPUTS

- | 2x RCA (0.1mV MC up to 8.0mV MM)
- | 1x XLR (0.1mV MC)
- | Load: 12 options [100KΩ, 75KΩ, 47KΩ, 33KΩ, 22KΩ, 1KΩ, 470Ω, 220Ω, 100Ω, 47Ω, 22Ω, 10Ω]
- | Capacitance: OFF, 100pF, 150pF, 220pF, 330pF, 470pF, 1000pF
- | Gain: 65dB MC, 40dB MM with 7 options [-9dB, -6dB, -3dB, 0dB, +3dB, +6dB, +9dB]

RCA IN 1: PHONO stereo unbalanced

RCA IN 2: PHONO stereo unbalanced

RCA IN 3: EXTERNAL LOAD/LINE stereo unbalanced (external load for fine adjustment applied for RCA 2 only, or line)

XLR IN 1: PHONO stereo balanced

XLR IN 2: EXTERNAL LOAD/LINE stereo balanced (external load for fine adjustment or line)

DIMENSIONS AND WEIGHT

Dimensions:
430mm W | 135mm H | 375mm D
630mm W | 350mm H | 600mm D - boxed

Weight:
Kg. 12 - net
Kg. 17 - boxed

FINISHES

Brushed Aluminium available in Black, Silver or Gold

UPGRADES

- | PSU-1250/1000 Ext. Inductive Power Supply
- | TUBE-1012/1006 Valve Output Stage

EQ CURVES

- | 20+ EQ Curve presets dedicated to Stereo, Mono and 78rpm records, or Flat.
- | 4 manually adjustable EQ Curve setups
- | Enhanced option ON/OFF (Neumann Cutting Lathe)

6 CAPACITANCE LEVELS

OFF, 100pF, 150pF, 220pF, 330pF, 470pF, 1000pF to finely match any cartridge.

RUMBLE SUBSONIC FILTER ON/OFF

Reduces distortion at low frequencies and prevents uncontrolled vibrations of the drivers.

CLASS-A PREAMPLIFIER STAGE

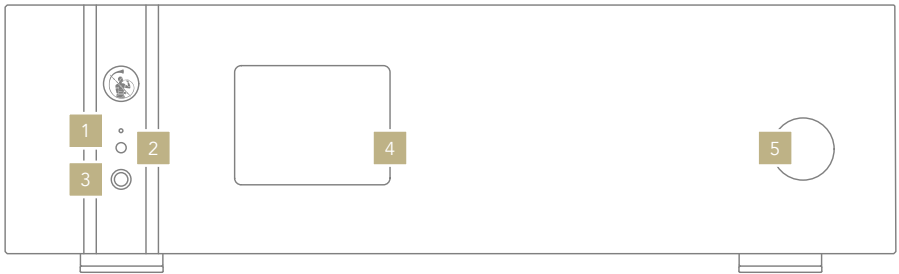
The PH-1000 optionally comes with a pure Class-A preamp stage, turning 1 RCA and 1 XLR into line stage inputs to be used with other audio sources (DACs, Streamers, CD players) for unprecedented versatility.

| FRONT PANEL

FRONT PANEL OVERVIEW

The PH-1000 shows every detail on the colour display powered by our proprietary firmware. With the SKC [Single Knob Control technology] and the display, you have an

intuitive system to easily control the phono stage and quickly make fine-adjustments without even interrupting the playback.



- 1 LED: Standby (red), PSU Ext (green), ON (blue), OFF
- 2 IR
- 3 Headphone output
- 4 Display
- 5 SKC (Single Knob Control)

| REAR PANEL

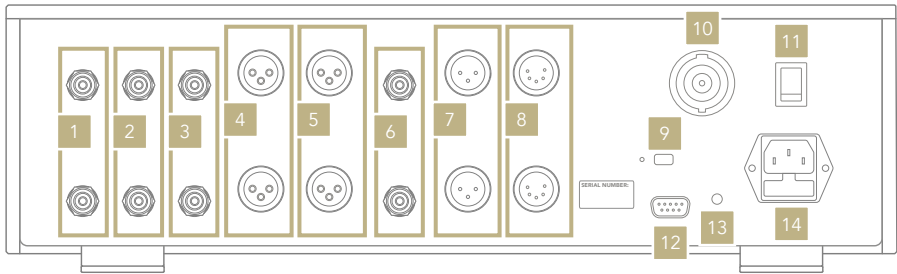
REAR PANEL OVERVIEW

The PH-1000 offers 3 independent inputs, two RCA and one XLR. There are also 2 other inputs, one RCA and one XLR, that can be used either for the external load plugs for even finer control of the Load or as line inputs on the PH-1000 with Preamp.

EXTERNAL LOAD

To use the external load on the RCA inputs, ensure to connect your turntable to RCA 2 and the external load to RCA 3.

To use the external load on the XLR inputs, ensure to connect your turntable to XLR 1 and the external load to XLR 2.



ANALOGUE INPUTS

- 1 RCA 1 Phono and GND 1
- 2 RCA 2 Phono and GND 2
- 3 RCA 3 and GND 3 (line or external load)
- 4 XLR 1 Phono (MC only)
- 5 XLR 2 (line or external load)

ANALOGUE OUTPUTS

- 6 RCA Line
- 7 XLR Line
- 8 Tube

POWER AND OTHERS

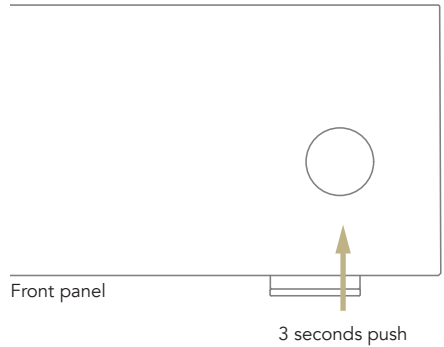
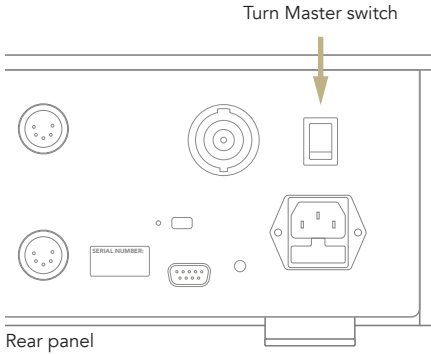
- 9 USB-Mini (for firmware updates only)
- 10 PSU IN
- 11 Master switch ON/OFF
- 12 RS IN
- 13 IR
- 14 AC plug IEC standard

| SELECT FUNCTIONS

TURNING ON/OFF PH-1000

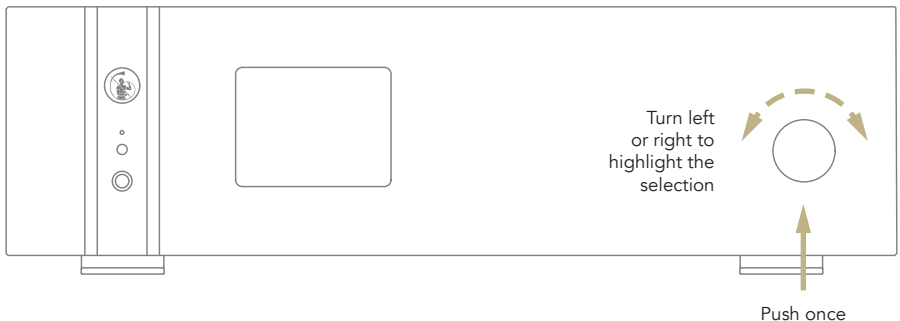
Use the MASTER SWITCH on the rear panel to power PH-1000: the STATUS LED will turn ON to indicate that PH-1000 is in Standby.

Then push the Single Knob Control for three seconds to activate the PH-1000: the STATUS LED will turn blue.



HOW TO SELECT THE FUNCTIONS

- 1 Press the knob once to activate the SELECTION FRAME.
- 2 Turn the knob left or right until the desired function is highlighted by in white then press the knob to select it.
- 3 The frame will turn red: now you can turn the knob to change the function.
- 4 Press the knob again when the desired value is set to confirm and exit the selection.



| DISPLAY OVERVIEW

CARTRIDGE SETTINGS

The PH-1000 shows all the settings on the display - there are a number of features that you can adjust to perfectly match your cartridge and get the best out of your records.

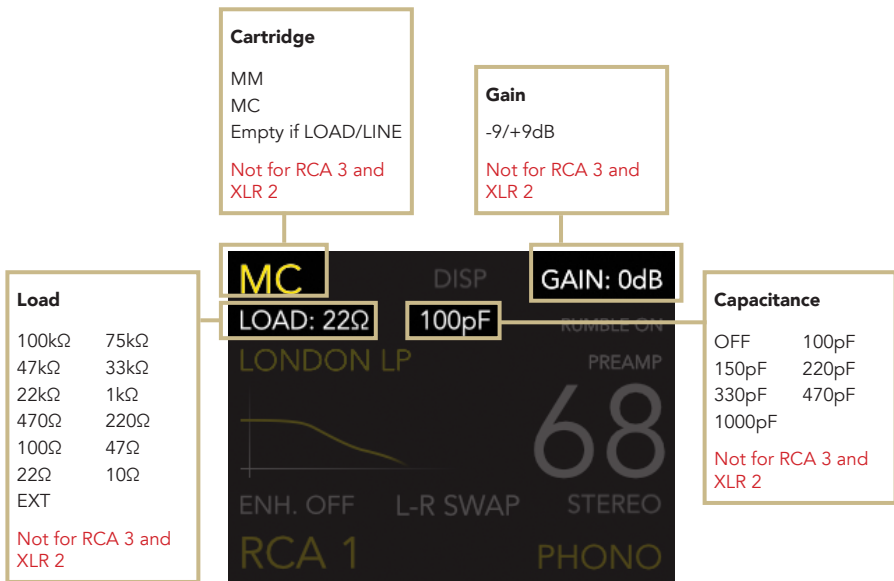
You can select the type of cartridge (MM or MC), the gain, the load and the capacitance when in MM mode.

PH-1000

The external load for the RCA inputs is taken from RCA 3 and applies to RCA 2 only. For the XLR input, it is taken from XLR 2.

PH-1000 LINE

These settings are not available on RCA 3 and XLR 2 which are dedicated exclusively to the external load and the line preamplifier.



| DISPLAY OVERVIEW

SETTINGS AND FEATURES

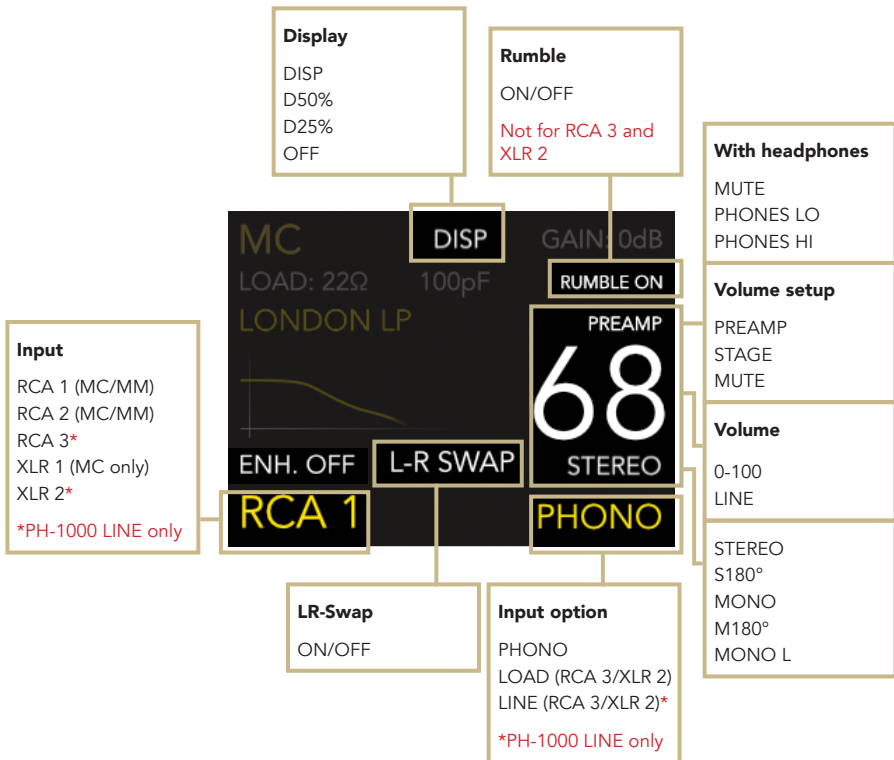
The other settings are dedicated to the features of the PH-1000. You can change inputs (RCA 3 and XLR 2 are available only on the PH-1000 LINE), swap the L-R channels, turn on/off the subsonic filter, and select the Mono or Stereo mode.

You can also adjust the brightness of the display. When turned off, use the knob to temporarily activate it again.

Both the PH-1000 and the PH-1000 LINE feature a the mute function that can be selected from the menu. The LINE model also displays the volume.

PH-1000 LINE

Thanks to the Class-A built-in preamplifier, the PH-1000 LINE features a volume control so you can use the knob to adjust the volume.



| EQ CURVES

EQUALISATION CURVE PRESETS

The PH-1000 lets you select the most appropriate EQ curve for every record with 40 presets available. We included 18 of the most common and widespread curves: such as RIAA, Capitol, Columbia/CBS, Deutsche Grammophon, Decca London USA, Decca London UK, Decca Mono 78rpm, Epic, HMW, Mercury, RCA Victor, Philips, Elektra, l'Oliseau-Lyre and Parlophone.

The curves are realised exclusively with analogue components as the whole circuitry works in the analogue domain through audio-grade switches that modify the audio signal path.

Each curve can also be enhanced with our proprietary design derived from the Neumann Cutting Lathe project for superior dynamic and high-frequency extension.

The image shows a digital display of the PH-1000's EQ preset menu. The selected preset is 'LONDON LP', which is highlighted with a yellow box. Below it, the 'ENH. OFF' option is also highlighted. To the right, the 'RCA 1' option is visible. Two callout boxes provide additional information: one for 'Enhanced' mode, which is currently turned off, and another for 'EQ Curves', which offers +20 EQ Curves with the 'Enhanced' mode. The background of the display shows various other menu options like 'MC', 'DISP', 'GAIN: 0dB', 'LOAD: 22Ω', '100pF', 'RUMBLE ON', 'PREAMP', '68', 'L-R SWAP', 'STEREO', and 'PHONO'.

EQ CURVES AVAILABLE

Order on device	Equalisation
Curve 1	RIAA
Curve 2	Capitol
Curve 3	Columbia LP
Curve 4	NAB
Curve 5	AES
Curve 6	London LP
Curve 7	DGG Teldec
Curve 8	DGG IECN78
Curve 9	RCA 45

Order on device	Equalisation
Curve 10	Old RCA
Curve 11	Telefunken
Curve 12	CCIR 78
Curve 13	Old Otrho.
Curve 14	Philips
Curve 15	500-Flat
Curve 16	American 78
Curve 17	FFRR 78
Curve 18	Blumlein300

| EQ CURVES

LIMITLESS CUSTOM CURVES

The ability to manually modify the curves is an exclusive feature of the PH-1000. Using analogue technology, we developed a unique design that allows you to create unlimited equalisation curves simply acting on 3 parameters - Bass Turnover, Bass Shelf and Treble Cut - as it's the most effective way to control and plot an equalisation curve.

There are 4 custom presets available that you can edit using the dedicated menu.

Bass Turnover (Hz)

This parameter controls the frequency at which the EQ curve reaches 3dB. You can adjust the frequency from 200Hz to 800Hz (for the RIAA standard EQ curve, this parameter is 500Hz).

Bass Shelf (dB)

This parameter controls the gain at 10Hz and it's also called a "low frequency shelving filter", allowing you to adjust the gain from +12dB to +20dB. It can also be set to N which means it won't affect the curve (for the RIAA standard EQ curve, this parameter is R= +20dB).

Treble Cut (dB)

Also known as the "10KHz gain roll-off", this parameter determines the cut at 10KHz and can be adjusted from 0dB to -24dB (for the RIAA standard EQ curve, this parameter is -13.7dB).



www.goldnote.it/download/media/PH-1000_EQ_Card.pdf

For the list of values to set the parameters please check:

The screenshot shows the EQ interface with the following callouts:

- EQ available:** EQ 1, EQ 2, EQ 3, EQ 4
- Bass Turnover:** 200, 250, 300, 350, 400, 500, 600, 630, 700, 800
- Save:** Save the new customized curve on the selected preset.
- Bass Shelf:** X = +12dB, C = +14dB, A = +16dB, B = +18dB, R = +20dB, N = Null
- Treble Cut:** 0, -5, -5,5, -5,7, -6, -7, -8, -8,5, -10, -10,3, -10,5, -11, -12, -12,3, -12,7, -13,7, -15, -16, -18, -24
- Cancel:** Cancel the customization.

| FIRMWARE UPDATE

We are constantly striving to deliver the best user experience and audio quality with our products, releasing new firmware updates is part of our commitment.

Please keep your Gold Note unit updated with the latest firmware whenever possible, that's the best way to ensure that your system is delivering the highest performance.

To check if there's a new firmware version available and to learn how to update your unit, please scan the QR-Code and visit the dedicated page on our website.



www.goldnote.it/update/ph-1000/

| WARRANTY AND SERVICE

WARRANTY

To validate the warranty it is necessary to register the unit on the Gold Note internet website within 15 days from the purchase on www.goldnote.it/warranty

If the unit is not registered correctly or has been purchased from a different country of the purchaser home address the unit will not be covered by any warranty and the registration will be refused.

The warranty does not cover in any case: Tubes, Phono Cartridge Stylus and Batteries.

Do not return any object directly to the factory or to the distributor without being authorised to do so.

In such cases both GOLD NOTE and the distribution agents decline responsibility of any kind. For more information please visit www.goldnote.it/service

PLEASE NOTE

Descriptions and technical characteristics may vary at any time and without notice.

SERVICE

Every GOLD NOTE product is the result of meticulous technological research and consequently their correct functioning is guaranteed. In spite of this, it is possible that problems may emerge which non-specialist users cannot resolve.

In this case, contact your dealer to be advised on how the fault can be solved.

| TROUBLESHOOTING

PROBLEM	CAUSE	SOLUTION
Buzzing noise coming from the loudspeakers.	The phono stage is very sensitive to the surrounding environment.	Try different placements of the phono stage and ensure that the environment is not affected by RFI/EMI. Always use shielded cables.
	The ground connector is not connected correctly.	Try to connect and disconnect the cables and ensure they are working properly.
	The cables are not connected properly.	Always connect the interconnect input to test how the phono stage performs.
	The listening volume is very high while no music is playing.	High performance phono stages will produce a buzzing noise when the volume is too high. It's normal when no music is playing and with MC gain selection.
	The tonearm and the cartridge are not installed properly.	Check cartridge and the tonearm.

PROBLEM	CAUSE	SOLUTION
The sound seems off.	<ul style="list-style-type: none"> Any MC and MM cartridge has specific values that should be set to achieve the best performance. 	<ul style="list-style-type: none"> Refer to the manufacturer's specifications to set up MC and MM cartridges.
PH-1000 is not working.	<ul style="list-style-type: none"> The interconnect cables used on the input/output are not shielded. 	<ul style="list-style-type: none"> Always use only shielded cables.
	<ul style="list-style-type: none"> The power cord is not plugged in. 	<ul style="list-style-type: none"> Connect the power cord properly and ensure the power outlet is working.
	<ul style="list-style-type: none"> The cables are not connected to the tonearm. 	<ul style="list-style-type: none"> Ensure that the cables are properly connected.
	<ul style="list-style-type: none"> The IEC fuse is blown. 	<ul style="list-style-type: none"> Replace it with one of the same value.

CLEANING THE UNIT

With EXTREME care use ONLY water or detergents for delicate surfaces with a very soft cloth to sweep dust and remove stains.
Any acid or not extremely soft cloth will irreversibly damage the unit. Do not use alcohol.

If you have any questions contact us at: service@goldnote.it

| RELATED PRODUCTS

CARTRIDGES

| TUSCANY

Our top-of-the-line MC cartridge, the result of over 20 years of experience, boasts an extra-thin Micro Ridge diamond tip and precisely hand-wrapped coils.

| MACHIAVELLI MkII

A low output MC cartridge that delivers a fantastic dynamic range and tonal balance, the perfect tool to extract the finest details from your records.

| DONATELLO

Lightweight MC phono cartridge with top-of-the-range performance. Features Micro Elliptical diamonds, copper coils and Duraluminium body.

TURNTABLES

| MEDITERRANEO

The best turntable we've ever made. Features exclusive materials, 45mm anti-vibration POM platter, Quadral-Core motor control, and electronic 33/45rpm speed adjustment with pitch control.

| GIGLIO

The Italian turntable that features technical solutions coming directly from the flagship Mediterraneo. With a 33mm platter, a high-precision bearing/spindle system, and our proprietary motor powered by a Quadral-Core micro-controller.

| PIANOSA

Italian design meets technical innovation and impeccable finishes. Pianosa is a handmade turntable featuring a 23mm platter made of dampening polyvinyl and our proprietary motor powered by micro-controlled for 33/45rpm.

ELECTRONICS

| P-1000 MkII

High-quality Class-A line preamp with 8 XLR/RCA inputs and optional external power supply.

| PA-1175 MkII

Class-A/B power amplifier with variable Damping Factor technology for a perfect match with all types of loudspeakers.

| PSU-1250/1000

External power supplies dedicated to the 1000 Line of electronics to enhance musical realism, staging and deliver even finer details.

| TUBE-1012/1006

Class-A valve output stage available with 6 or 12 valves, dedicated to the 1000 Line of electronics or units from other manufacturers.

LOUDSPEAKERS

| XS-85

Our flagship loudspeaker, a full-range 3-way design featuring a bass reflex port, top-quality crossover and the best materials and finishes.

| XT-7

Innovative full-range loudspeaker with a 3-way design, bass reflex port and AMT ribbon tweeter. unmistakable look.



Discover more on our website

www.goldnote.it/products/



Designed and handmade in Firenze, Italy
www.goldnote.it
service@goldnote.it
copyright ©2020 Akamai S.r.l. All rights reserved