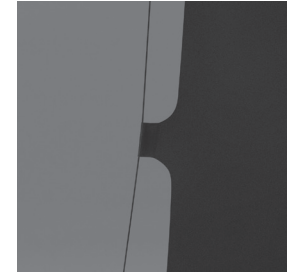
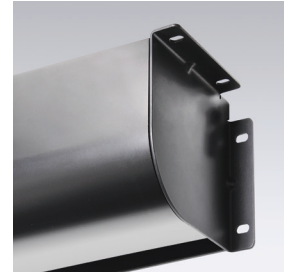


ELECTRIC Premier XL

TAB-TENSIONED, CEILING- OR WALL-MOUNTED



■ Ideal for conference rooms, classrooms, or home theaters, the economical Premier XL wall- or ceiling-mounted electric projection screen features a tab-tensioned viewing surface. Housed in fabricated extruded aluminum with a curved front and L-shaped back/top cover with black finish. The motor-in-roller is insulated to provide the Premier XL with smooth, quiet operation.

THIS SCREEN IS TAB-TENSIONED
RF welded tabs eliminate stickiness and tab separation. Tabs warranted against separation for five years. Tab-tensioned screens provide a perfectly flat viewing surface with better image quality.

FEATURES

- Image area fully framed with black. Standard 12" (30 cm) black drop at top of viewing area. Optional extra drop available which may increase case length.
- Includes one 110-120V, 3-position switch (standard). Other control options are available.



OPTIONS

- Optional wall- or ceiling-mounting brackets for added flexibility.
- Control options available. Optional Plug & Play with built-in low-voltage controller (LP) or with built-in quiet, low-voltage controller (QLP). Screens over 119" diagonal on 16:9 format on this screen cannot use QLP.
- **Viewing Surfaces:** TecVision®, OptiFlex™ (tensioned), CineFlex™ (rear projection) and ClearSound™ families.

SIZES

- **Case dimensions** 6¾" high x 6¾" deep (17 cm x 17 cm).
- Maximum image width up to 16' (488 cm) wide, depending on surface selection.
- 16:10 FORMAT: from 189" (480 cm) to 226" (574 cm) diagonal.
- 16:9 HDTV FORMAT: from 184" (467 cm) to 220" (559 cm) diagonal.
- 4:3 NTSC/PAL FORMAT: from 200" (508 cm) to 240" (610 cm) diagonal.
- AV FORMAT: from 14' x 14' (427 cm x 427 cm) to 12' x 16' (365 cm x 488 cm) viewing area.
- Custom sizes available.

WARRANTY

draperinc.com/warranty.aspx

SUPPORTING DOCUMENTS

All instructions, technical drawings and other supporting documents are located at: draperinc.com/documents.aspx

For more information on this product visit: draperinc.com/projectionscreens/electricscreens.aspx